

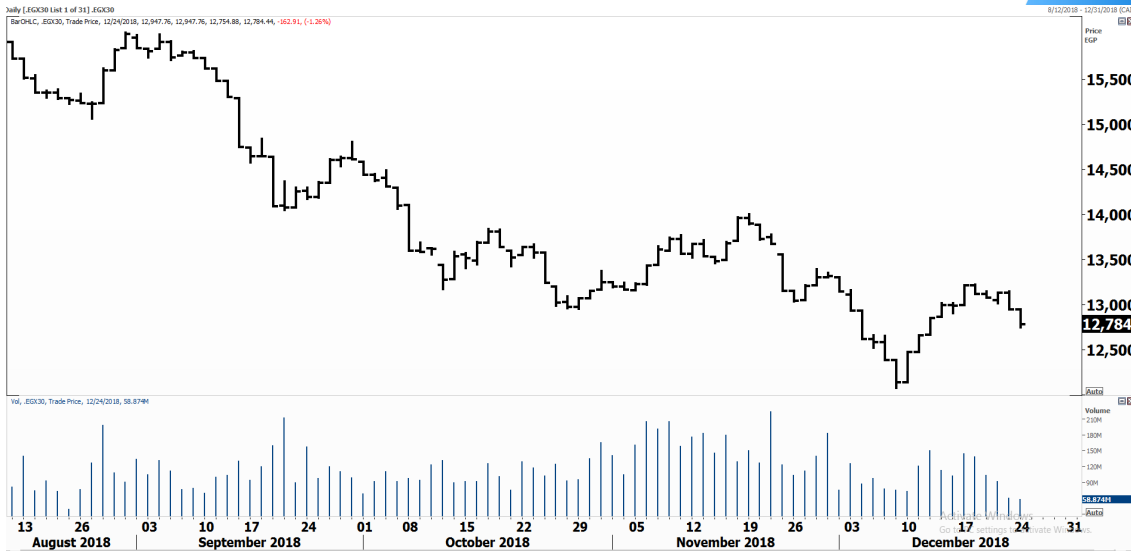


PIONEERSECURITIES

TECH TO THE POINT

25-Dec-18

This report must be read with the disclaimer
on the last page



Last	12,784.44
High Today	12,947.76
Low Today	12,754.88
Volume M	58.874
First Support	12,400.00
Second Support	12,000.00
First Resistance	13,250.00
Second Resistance	14,000.00
Stop Loss	
	12,784.44
	12,500
HISTORICAL RETURN %	
1 WEEK	-3.26%
1 MONTH	-6.51%
1 QUARTER	-9.97%
1 YEAR	-13.56%
YTD	-14.88%

Analysis

The index closed at 12,784 at the end of the session and is approaching our area of interest that lies at 12,400-12,500. As we mentioned before, we are looking at this area and then are looking at around 12,000; a break below this bottom is unlikely to occur.

For new entries, we recommend waiting for a clear break above 13,250 for more confirmation as a break above this level will lead to a significant rise to our 14,000 important peak.

Thus, investors should begin monitoring the market as it approaches 12,500 as a higher low formation might occur.

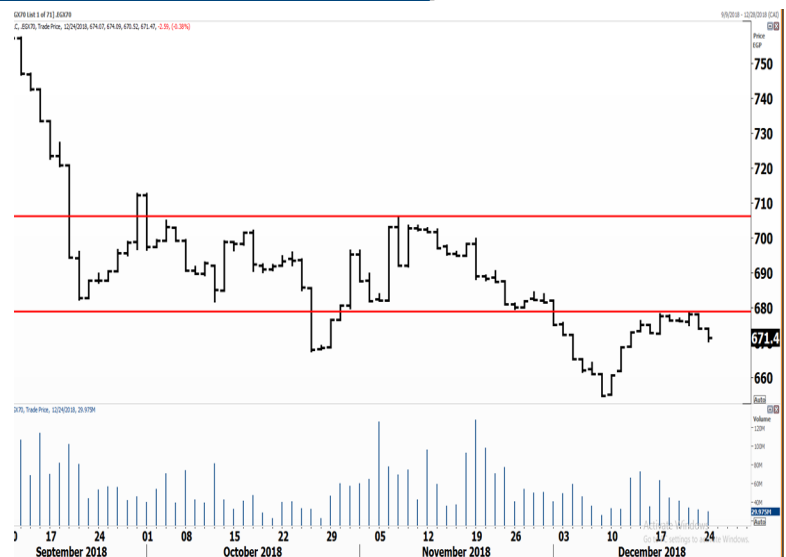
Egyptian Exchange Small Caps Index EGX70

Analysis

The EGX 70 index created a new minor peak at 678; this new level can be used as our early sign of entry should a rebound occur in the market.

Thus, those who want to step in are recommended to wait for a break above 678; this will lead the EGX 70 near the 700-710 resistance area, which is considered as a stronger and more important resistance area.

As for the downside potential, we believe that the 660 level should act as support.



Resistance


No stocks broke their resistance yesterday


Support


No stocks broke their support yesterday.

Testing

Support

ORWE  Closed at 10.05 after testing its support that lies at 9.9. A rebound from here will lead ORWE to 10.65, then 11.35; these are the two first levels to watch. Those who want to enter after clear confirmation should wait for the breakout above 11.35.

EGTS  Approached its support that lies at 1.68 and rebounded slightly to close at 1.74. It is important to note that EGTS is facing a significant resistance at 1.88. We recommend investors to wait for a breakout above this level before stepping in.

SKPC  The 16.5 level is an important support for the stock. Despite its overall underperformance, a rebound from current levels might occur. First important resistance will be set at 18. Only a break above this level will be considered bullish for the stock as our target will be set near 21.

Resistance

Symbol	S. Description	Last	Support 1	Support 2	Resistance 1	Resistance 2	Trend	Recommendation	Stop Loss/ Re-Entry
COMI.CA	COM INTL BK	72.75	71.50	67.00	75.00	77.75	↓	P.SELL	75.00
EAST.CA	EASTERN CO	15.82	15.20	14.50	17.55	19.00	↓	P.SELL	17.55
SWDY.CA	ELSWEDY ELECTRIC	16.23	16.00	13.90	17.50	18.30	↓	P.SELL	17.50
TMGH.CA	TALAT MOSTAFA	9.73	9.50	8.70	10.25	10.50	↓	P.SELL	10.50
ABUK.CA	ABU QIR FRT&CHM	24.00	24.00 *	22.00	26.00	27.75	↓	P.SELL	27.75
EKHO.CA	EGYPT KUWAIT HLD	1.08	\$1.03	\$1.00	\$1.10	\$1.13	↓	P.SELL	\$1.13
HRHO.CA	EFG HERMES HOLD	15.08	14.50	13.60	15.70	16.20	↔	Hold	13.60
GTHE.CA	GLOBAL TELECO	3.65	3.20	2.75	3.80	3.93	↔	Hold	3.80
AMOC.CA	ALX MINERAL OILS	6.20	5.90	5.60	6.80	7.50	↓	P.SELL	7.50
MNHD.CA	MEDINET NASR HOU	6.70	6.70 *	6.30	7.30	7.65	↓	P.SELL	7.65
SKPC.CA	SIDI KERIR PETRC	16.85	16.30	15.70	18.10	19.23	↓	P.SELL	20.60
OCDI.CA	6TH OCT DEV INV	13.35	12.90	12.00	14.80	16.00	↓	P.SELL	16.00
JUFO.CA	JUHAYNA FOOD IND	11.14	10.50	9.50	11.30	13.00	↔	Hold	9.50
ESRS.CA	EZZ STEEL	18.20	17.25	16.00	20.00	21.00	↓	P.SELL	20.00
ETEL.CA	TELECOM EGYPT	12.50	11.40	10.85	13.20	14.50	↑	Hold	11.40
CCAP.CA	CITADEL CAPITAL	3.51	3.40	3.20	3.83	4.00	↓	P.SELL	4.00
QNBA.CA	QNB ALAHLI	39.50	40.00 *	38.00	46.00	50.00	↓	P.SELL	50.00
PHDC.CA	PALM HILL DEV CO	2.16	2.12	2.06	2.43	2.58	↓	P.SELL	2.58
ORAS.CA	ORASCOM CONST	112.50	108.00	106.00	120.00	127.00	↔	Hold	108.00
HELI.CA	Misr Gedida Hou	18.00	17.30	16.30	18.80	19.50	↓	P.SELL	19.50
EFID.CA	EDITA FOOD INDS	0.00	13.00	12.20	15.20	17.00	↓	P.SELL	16.00
ISPH.CA	IBNSINA PHARMA	10.04	9.50	8.60	10.50	11.00	↔	Hold	9.50
EMFD.CA	EMAAR MISR DEV	3.20	3.11	2.90	3.45	3.72	↔	Hold	3.45
PIOH.CA	PIONEERS HLDG	5.95	5.50	5.00	6.40	6.80	↔	Hold	5.50
OIH.CA	ORASCOM INVESTMENT HOLD- ING	0.56	0.54	0.51	0.58	0.60	↔	Hold	0.51
EGAL.CA	EGYPT ALUMINIUM	22.40	21.65	20.60	24.00	25.50	↔	Hold	21.65
EGTS.CA	EGYPTIAN RESORTS	1.75	1.68	1.42	1.94	2.05	↓	P.SELL	2.05
PORT.CA	PORTO GROUP	0.80	0.78	0.74	0.96	1.20	↔	Hold	0.74
IRON.CA	EGYPTIAN IR & ST	5.15	5.00	4.50	5.70	6.00	↔	Hold	5.70
ACGC.CA	ARAB COTTON GIN.	1.72	1.70	1.60	2.00	2.15	↔	Hold	1.65

Guidelines



Bullish



Bearish



Neutral

Trend: (Upgrade, Downgrade): Change in trend color refers to upgrade or downgrade in the trend relative to the previous trend direction. E.g. change from "↓ Down" to "↔ Flat" is considered an upgrade and vice versa.

Buy: Buy the full position.

P.Buy: Buy portion of a position

Hold: Don't Buy or sell.

P.SELL: Sell portion of a position.

Sell: Sell the full position.

Stop Loss: Completely exit the position (or) Re-entry in cases of Selling.

Disclaimer

This report has been prepared according to the general data available for public, in accordance with the professional standards applied in that career to the best knowledge of the reporter. The recommendations mentioned are a guiding tool representing a professional opinion, and not granting any profits, consequently it is not obligatory for our valued customers and investors. Pioneers Securities©, Egypt shall not be liable for any direct, indirect, incidental, or consequential damages, including limitation losses, lost revenues, or lost profits that may result from these materials. Republishing this report or any of its contents is subject to prior approval; referring to the source is a must. Opinions expressed are subject to change without notice and may differ or be contrary to the opinions or recommendations of Pioneers Securities©, Egypt Research or the opinions expressed by other business areas or groups of Pioneers Securities©, Egypt as a result of depending solely on the historical technical behavior (price and volume).

Technical Analysis Department

Saleh Nasser

Chief Technical Strategist

Ahmed Hassan

Senior Technical Analyst

Dina Fahmy

Senior Technical Analyst

Tips on reading the report

The first page includes an analysis of two major indices in the Egyptian Stock Market; the norm is that we will analyze both the EGX 30 and 70, but sometimes we will compare the EGX 30 to its 50 counterpart if there is important information in this comparison. We also use the Hermes Last Index interchangeably with the EGX 30. The .HRMSL index has an important edge; it uses last prices instead of VWAP. First thing our clients should do is to read the indices analysis carefully to have a clear understanding on our overall view.

The second page includes stocks that broke out beyond their resistance levels, and those that violated their support levels. It also includes stocks that are testing their support levels and those that are testing their resistance. This analysis is important and it is the core of our recommendations. It is important to note though that not all stocks that are testing their support levels are bullish, and not all that are testing their resistance levels are bearish. To make it easier for our clients, we have placed a bull face 🐂 if we consider the stock under study bullish, and a bear face 🐻 if we consider it bearish. We also added a big bullet 🟩 if we are neutral.

It is important to note that you might find a stock that we consider bullish in our analysis (in the breakouts/testing section) but it remains as a hold or partial sell in the table. The conflict here is that the table is more conservative. This will not be an issue with our clients, because our analysis will explain why we are being bullish/bearish on the stock.